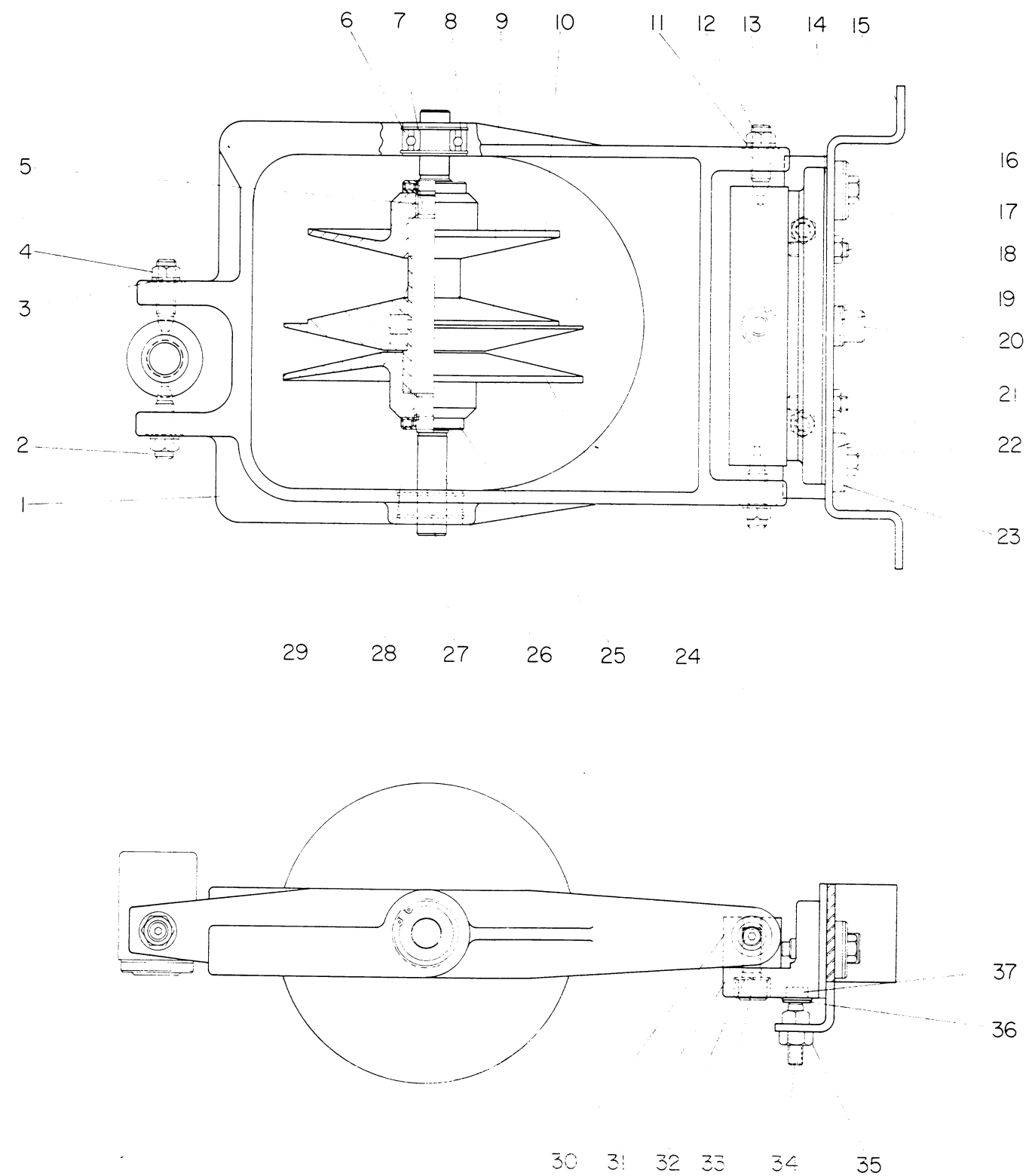
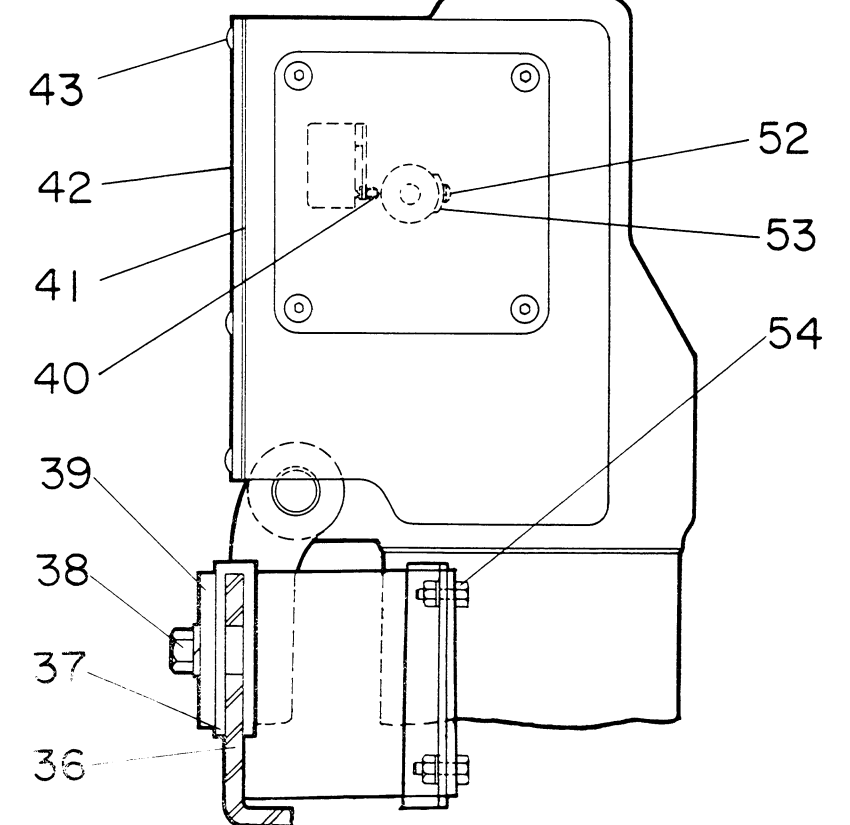
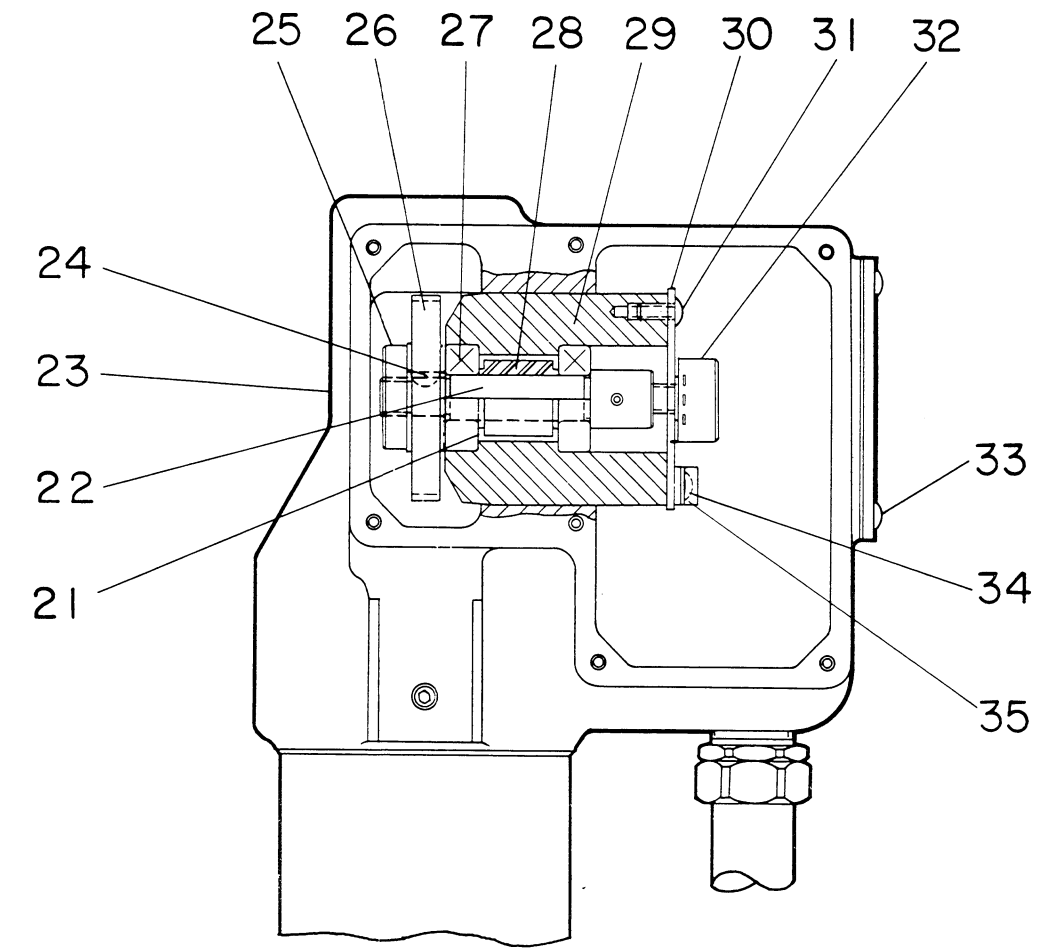
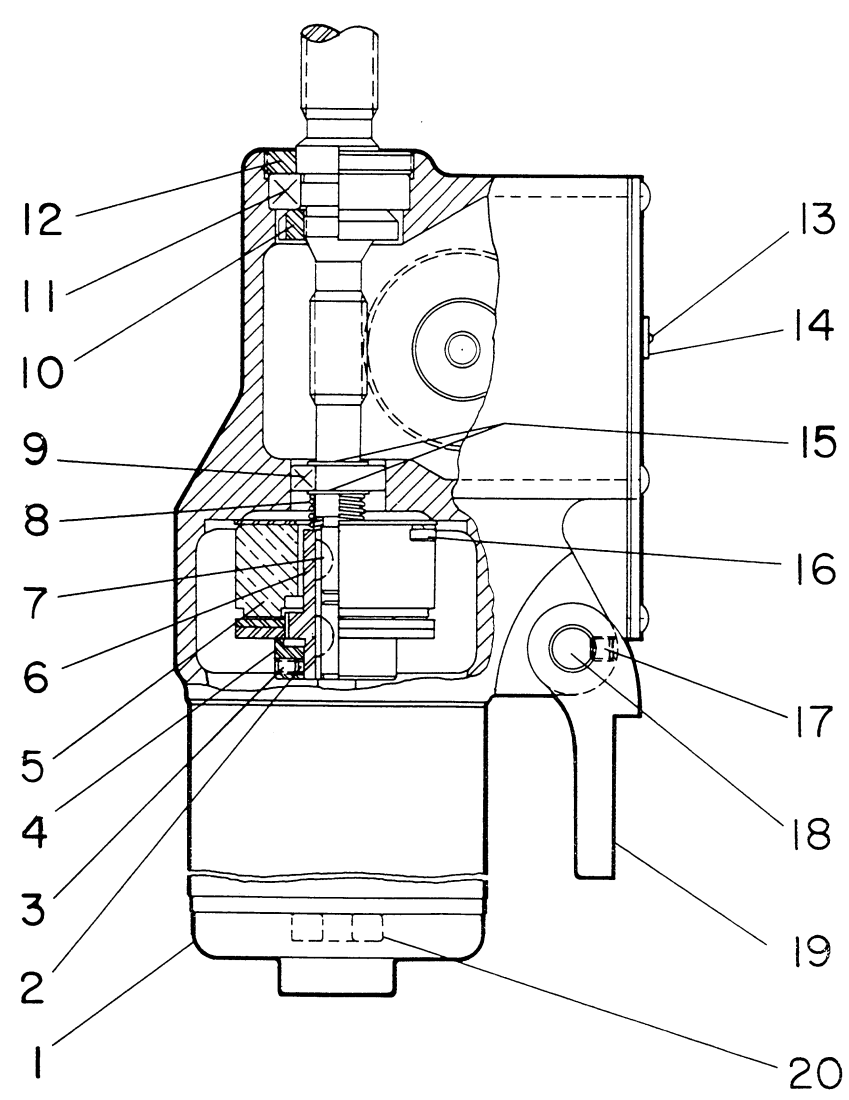
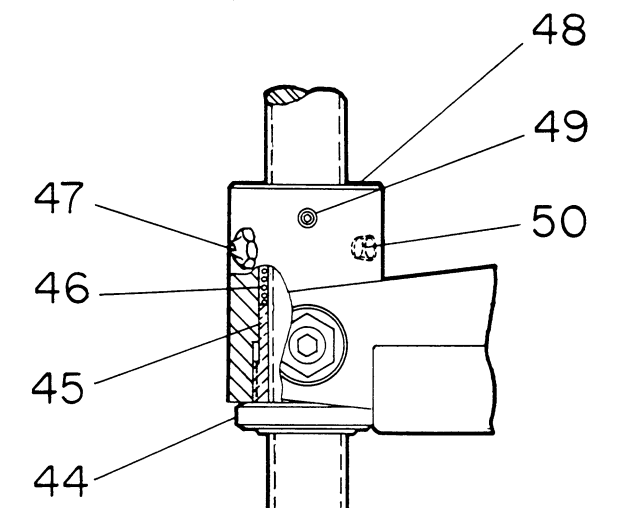
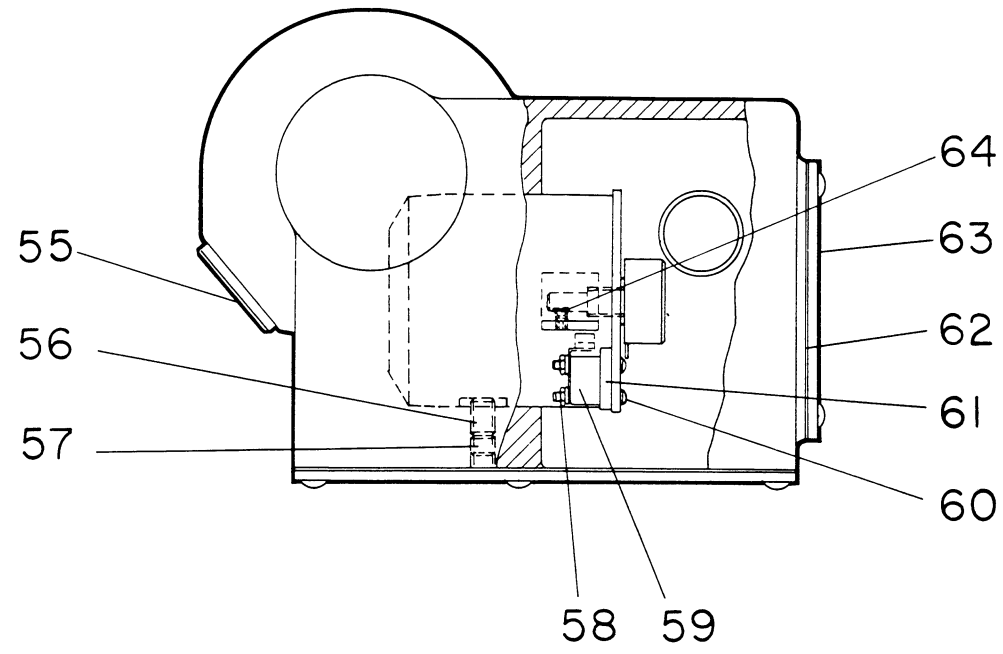


# VARIABLE SPEED PULLEY ASSEMBLY

KEY	PART NUMBER										PCS	NAME	
1	C	H	A	0	0	1	0	1	8	0		1	Drive Support
2	Q	S		0	0	1	0	1	4	1		2	Screw
3	5	P		0	0	0	6	4	3	4		2	Washer
4	5			0	0	0	1	4	6	6		2	Nut
5	4	7		0	0	0	1	5	1	4		2	Key
6	C	W		0	0	0	9	0	5	8		2	Bearing
7	1	6	5	0	0	0	8	2	3	1		3	Retaining Ring
8	5			0	0	1	0	4	0	5		1	Shim
9	C	H	B	0	0	0	9	7	7	7		1	Inner Pulley
10	C	H	A	0	0	0	9	7	7	6	R	1	Outer Pulley (Right)
11	5	P		0	0	0	6	4	3	4		2	Lock Washer
12	5			0	0	0	1	4	6	6		2	Nut
13	Q	S		0	0	1	0	1	4	1		2	Screw
14	D	V		0	0	1	0	5	3	7		1	Insulator
15	C	H	B	0	0	0	1	9	9	0	4 7	1	Bracket
16	7			0	0	0	1	5	0	7		2	Nut
17				0	5	5	1	0	2	4		2	Screw
18	D	V		0	0	1	0	5	3	6		1	Bushing
19	5	P		0	0	0	6	4	3	3		1	Washer
20				0	1	0	1	3	2	0		1	Screw
21	D	V		0	0	1	0	5	4	2		2	Rubber Washer
22				0	1	5	1	0	2	0		2	Screw
23	Q	S		0	0	1	0	1	4	3		2	Washer
24	C	H	A	0	0	0	9	7	7	6	L	1	Outer Pulley (Left)
25	D	V		0	0	1	0	2	1	4		1	Nut
26	H	C	B	0	0	0	9	7	8	1		1	Tie Shaft
27	N	3	7	0	0	0	0	7	3	6		2	Nylon Plug
28				0	5	5	0	3	0	5		2	Screw
29	C	H	B	0	0	1	0	5	1	4		1	Key
30	H	C	V	0	0	1	0	1	4	0		1	Pivot Block
31	Q	S	A	0	0	1	0	1	2	1		1	Support Bracket
32	5	P		0	0	0	6	4	3	4		1	Lock Washer
33				0	1	0	1	3	2	0		1	Screw
34				0	5	5	1	0	2	4		2	Screw
35	7			0	0	0	1	5	0	2		2	Nut
36	D	V		0	0	1	0	5	6	7		2	Bushing
37	D	V		0	0	1	0	5	4	1		2	Bumper



# VARIABLE SPEED CONTROL

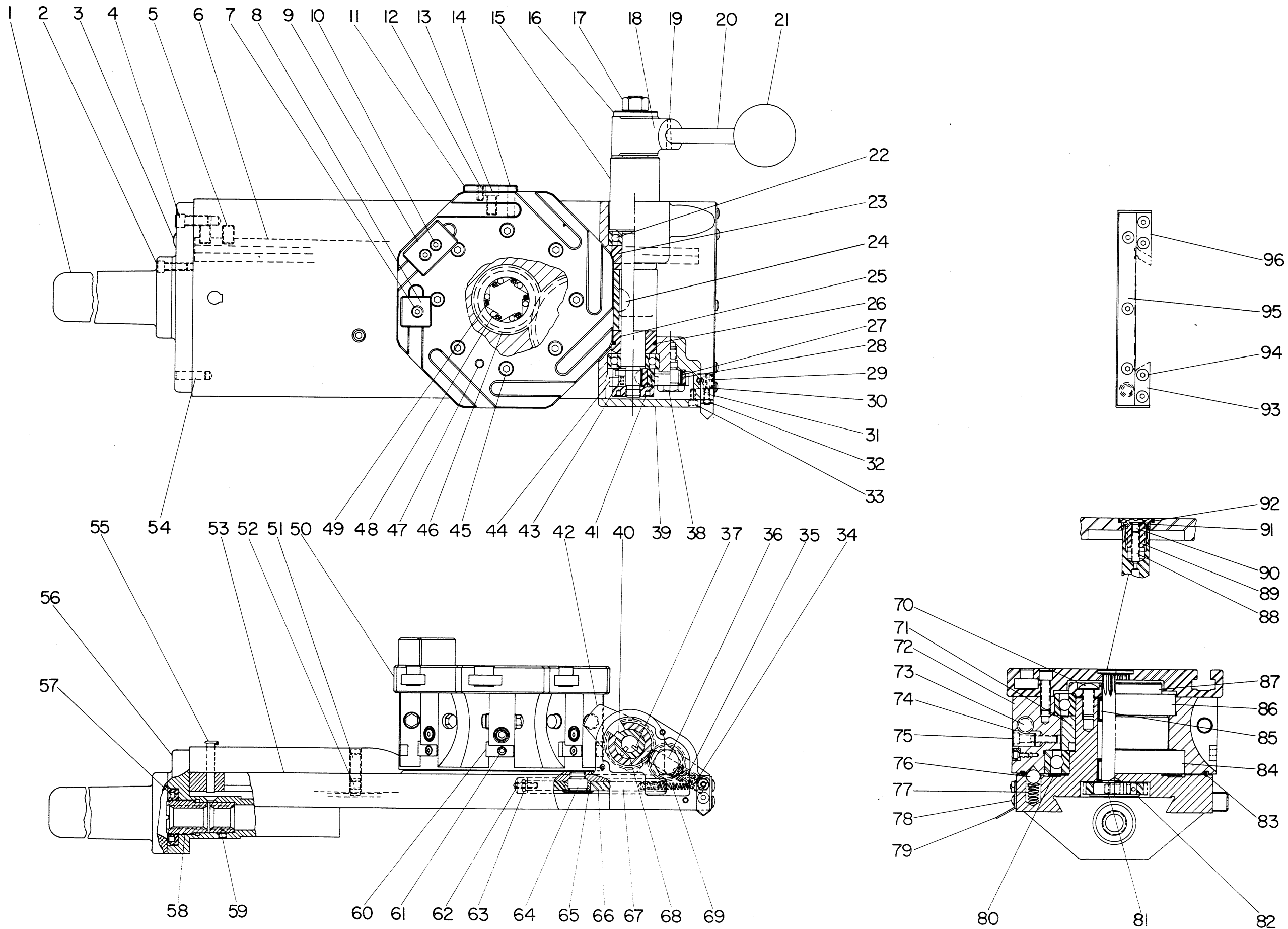


## VARIABLE SPEED CONTROL

KEY	PART NUMBER										PCS	NAME	
1	2	2	T	3	7	6	1	5	6	1	1	Motor (Used on 208 and 230V, 60 Hz, and 200, 208, and 230V, 50 Hz Machines Only)	
	2	2	D	3	7	6	1	5	6	1	1	Motor (Used on 460V, 60 Hz - 230/460V, 60 Hz - 440V, 50 Hz - 380V, 50 Hz, 400V, 50 Hz - 415V, 50 Hz Machines Only)	
	5	5	0	3	7	6	1	5	6	1	1	Motor (Used on 575V, 60 Hz Machines Only)	
	C	H	B	0	0	1	0	2	2	1	1	Housing For Control	
	5	0		0	0	1	0	3	6	6	0 1	1	Tag (For 200, 208, and 230V, 50 Hz Machines Only)
	5	0		0	0	1	0	3	6	6	0 2	1	Tag (For 380, 400, 415, and 440V, 50 Hz Machines Only)
2	N	3	7	0	0	C	0	4	8	3	1	Plug	
3				0	5	5	0	3	0	5	1	Screw	
4	P			0	0	1	0	4	9	2	1	Adjusting Hub	
5	P	B		0	0	1	0	3	0	3	1	Brake	
6	P	A		0	0	1	0	4	9	1	1	Armature Hub	
7	3			0	0	0	1	7	5	9	2	Key	
8	H	C		0	0	1	0	0	5	8	1	Spring	
9	G	T		0	0	0	9	3	2	3	1	Bearing	
10	N	O	5	0	0	0	4	1	3	5	1	Bearing Lock Nut	
11	W	E		0	0	0	9	0	3	3	1	Bearing	
12	P	A		0	0	1	0	3	1	7	1	Lock Nut	
13	R			0	0	0	8	0	4	4	2	Pin	
14	2	L	S	0	0	1	0	3	6	6	1	I.D. Tag	
15	5	9		0	0	0	8	2	3	1	0 2	2	Retaining Ring
16				0	1	0	0	2	0	6	4	Screw	
	8			0	0	0	9	9	4	1	4	Lock Washer	
17				0	5	5	0	8	0	4	2	Screw	
18	D	V	A	0	0	1	0	1	8	2	1	Swivel Pin	
19	D	V	B	0	0	1	0	1	9	2	1	Support	
20	T	L		0	0	0	6	6	1	7	1	Bearing	
21	T	L		0	0	0	6	4	8	0	3	.001" Shim	
	T	L		0	0	0	6	4	8	1	3	.002" Shim	
22	C	H	A	0	0	1	1	1	6	7	1	Shaft	
23	C	H	B	0	0	1	0	2	2	1	1	Housing	
24	H	C	V	0	0	1	0	5	8	9	1	Key	
25	C	H		0	0	0	9	0	5	0	1	Nut	
26	C	H	A	0	0	1	1	1	6	8	1	Worm Wheel	
27	T	L		0	0	0	6	6	1	8	2	Bearing	
28	V	S	C	0	0	0	1	7	9	9	1	Spacer	
29	C	H		0	0	1	1	1	9	4	1	Housing	

KEY	PART NUMBER										PCS	NAME	
30	C	H	B	0	0	1	1	1	6	9	1	Support	
31				0	3	0	0	3	0	8	1	Screw	
32	C	H	A	0	0	1	1	1	4	1	0 2	1	Rheostat
33				0	3	0	0	3	0	8	2	Screw	
34				0	3	0	0	3	0	8	1	Screw	
35	C	H		0	0	0	9	6	2	3	0 1	1	Clamp
36	C	H	B	0	0	1	0	3	3	6	1	Support	
37	D	V		0	0	1	0	5	4	0	1	Insulator	
	D	V		0	0	1	0	5	3	8	2	Bushing	
38				0	1	5	1	0	2	0	2	Screw	
	M	D		0	0	0	3	5	9	1	2	Lock Washer	
39	D	V	A	0	0	1	0	5	6	1	1	Plate	
40	C	H		0	0	1	1	1	3	6	1	Actuator	
41	C	H	A	0	0	1	0	2	1	6	1	Gasket	
42	C	H	A	0	0	1	0	1	9	5	1	Cover	
43				0	3	0	0	3	0	8	7	Screw	
44	U			0	0	0	1	8	1	1	1	Lock Nut	
45	P			0	0	0	1	8	1	0	1	Nut	
46	P			0	0	1	0	3	1	1	1	Spring	
47	D	V		0	0	1	0	3	2	7	1	Grease Fitting	
48	C	H		0	0	1	0	2	0	9	1	Housing	
49	V	S		0	0	1	0	3	7	9	1	Key Screw	
50	5			0	0	0	1	4	6	7	1	Pipe Plug	
51	H	C	C	0	0	1	0	1	9	1	1	Vertical Screw	
52				0	3	0	0	2	0	4	1	Screw	
53	C	H		0	0	0	9	8	4	1	1	Limit Switch Trip	
54				0	1	5	0	6	1	2	4	Screw	
	C	M		0	0	0	2	8	4	5	4	Lock Washer	
	5	P		0	0	0	2	8	4	3	4	Nut	
55	H	M		0	0	0	9	2	1	5	1	Pipe Plug	
56				0	5	5	0	8	0	4	2	Screw	
57				0	5	5	0	8	0	8	1	Screw	
58	E	F		0	0	0	9	8	8	6	2	Nut	
	S	L		0	0	0	8	1	3	7	2	Lock Washer	
59	C	H		0	0	1	0	2	2	4	1	Limit Switch	
60				0	3	5	0	0	1	4	2	Screw	
	C	H		0	0	1	0	1	1	1	2	Washer	
61	C	H		0	0	1	0	2	1	5	1	Insulator	
62	C	H		0	0	1	0	1	1	6	1	Gasket	
63	C	H		0	0	0	6	2	8	6	1	Cover	
64				0	5	5	0	2	0	2	1	Screw	
				0	6	4	0	2	0	2	1	Screw	

# TURRET ASSEMBLY



# TURRET ASSEMBLY

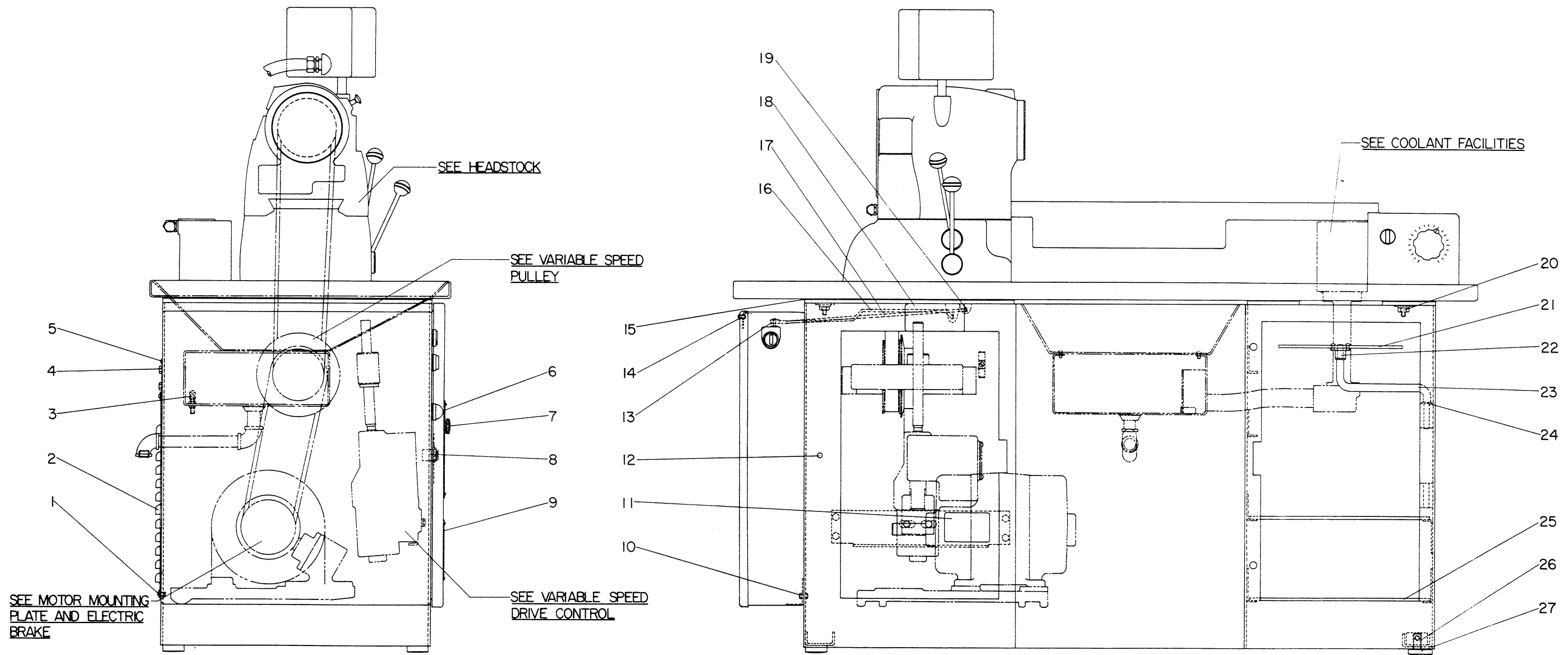
KEY	PART NUMBER										PCS	NAME	
1	C	H	0	0	1	0	6	4	9			1	Cover
2			0	1	0	0	3	1	2			4	Screw
3	7	5	0	0	1	0	3	3	1		B	1	Dot Plug
4			0	1	0	0	8	1	2			3	Screw
5	H	M	0	0	0	6	1	6	0			2	Gib Screw
6	C	H	0	0	0	7	6	3	0			1	Gib
	O	L	0	0	0	7	2	1	5			1	Single Tool Block
													Assembly (Consists of
7			0	5	5	0	9	1	0			1	Key Numbers 7 and 8.)
													Screw
8	O	L	0	0	0	7	2	1	5	0	1	1	Single Tool Block
	O	L	0	0	0	7	2	1	6			1	Double Tool Block
													Assembly (Consists of
													Key Numbers 9 and 10.)
9	O	L	0	0	0	7	2	1	6	0	1	1	Double Tool Block
10			0	5	5	0	9	1	0			2	Screw
11	C	W	A	0	0	0	7	6	1	1		1	Stop Block
12				0	5	5	0	3	0	8		2	Screw
13				0	1	0	0	8	1	0		1	Screw
14	T	L	0	0	0	7	6	0	8			1	Dowel
15	C	H	0	0	0	7	2	1	9			1	Index Lock Shaft
16	O	L	0	0	0	7	6	2	1			1	Washer
17	5	P	A	0	0	0	1	9	5	7		1	Nut
	C	H	0	0	0	7	2	2	0		B	1	Index Lock Handle
													Assembly (Consists of
													Key Numbers 18, 19,
													20, and 21)
18	C	W	A	0	0	0	7	2	5	8		1	Hub
19	3	7	0	0	0	0	4	7	8			1	Taper Pin
20	C	H	0	0	0	7	2	1	7			1	Handle
21	F	B	0	0	0	0	4	7	3			1	Ball For Handle
22	C	W	A	0	0	0	9	0	5	8		2	Bearing
23	C	W	A	0	0	0	8	9	9	9	0	1	Spacer
24	F		0	0	0	7	8	1	0			1	Key
25	C	W	A	0	0	0	8	9	9	9		1	Spacer
26	O	R	0	0	0	2	0	2	3			1	O-Ring
27	H	L	0	0	1	0	4	3	3			1	Bearing
28	C	H	0	0	1	0	4	5	9			1	25 Tooth Idler Gear
29	C	H	0	0	1	1	1	8	9			1	Plug
30	O	R	0	0	0	0	6	0	8			1	O-Ring

KEY	PART NUMBER										PCS	NAME	
31	C	H	0	0	0	0	3	6	0			1	Plug Lock Screw
32	M	D	0	0	0	2	8	8	3		B	1	Nut
*33			0	1	0	0	3	0	6			4	Screw
34			0	5	5	1	3	0	6			1	Screw
35	C	W	0	0	0	9	0	5	7			1	Spring
36	C	W	0	0	0	7	2	0	8			1	Spring Plunger
37	3	7	0	0	0	1	1	2	9			1	Key
38	C	H	0	0	0	7	3	7	0			1	Stud
*39	C	H	0	0	1	0	1	1	5			1	Cover
40	C	H	0	0	1	1	1	2	9			1	Drive Pin
41	C	H	0	0	0	9	0	5	0			1	Nut
42	C	H	0	0	0	7	2	2	1			1	Index Lock
43			0	5	5	2	8	0	5			1	Screw
44	C	H	0	0	1	1	1	2	8			1	33-Tooth Gear
45			0	1	0	0	8	1	6	3	6	10	Screw
‡46	C	H	A	0	0	0	6	1	4	7	4	4	Clutch Gear
47	F	B	0	0	0	6	9	2	3			1	Dowel
48	C	H	0	0	0	6	7	0	8			6	Clutch Pin
49	C	H	A	0	0	0	9	8	5	9		6	Spring
50	C	H	0	0	0	7	2	1	4			1	Top Plate
51			0	5	5	1	0	1	4			1	Screw
52	C	P	0	0	0	6	4	4	2			1	Stop Screw
*53	C	H	0	0	0	7	2	0	2	0	1	1	Turret Base Plate
54	T	L	0	0	0	6	7	0	8			2	Dowel
55	C	P	0	0	1	0	2	7	7			1	Oil Cup
56	C	H	A	0	0	1	0	6	5	1		1	Holder
57	C	P	A	0	0	0	0	2	6	0		1	Lock Nut
58	C	P	0	0	0	0	3	2	8			1	Nut For Cross
													Feed Screw (English)
	C	P	0	0	0	0	3	2	8		M	1	Nut For Cross
													Feed Screw (Metric)
59			0	5	9	0	5	0	4			1	Screw
†60	C	H	A	0	0	1	0	5	0	5		8	Stop Block
†61			0	1	0	0	2	0	6			8	Screw
62			0	5	5	0	3	1	2			1	Screw
63	3	7	A	0	0	0	0	3	6	1		1	Jam Nut
64	C	H	0	0	0	7	3	7	0	0	1	1	Stud
—	C	H	0	0	0	6	1	4	7	7	0	1	70-Tooth Idler Gear
													Assembly (Consists of
													Key Numbers 65 and 66)

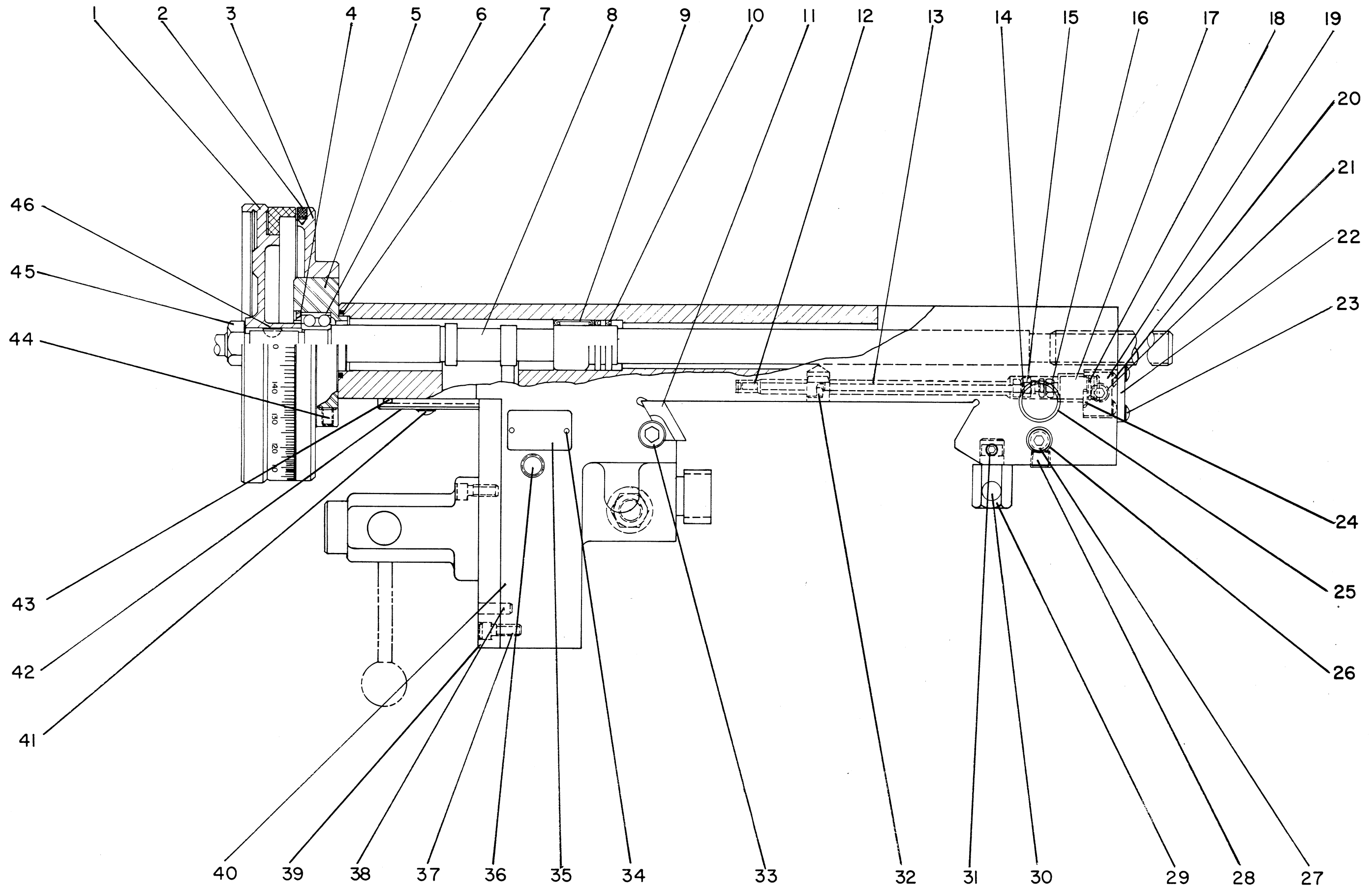
KEY	PART NUMBER										PCS	NAME		
65	C	H	0	0	0	4	1	4	4	0	5	1	Bearing For Idler Gear	
66	C	H	0	0	0	6	1	4	7	7	0	0	1	70-Tooth Idler Gear
67	C	H	0	0	1	1	1	3	0			1	Circular Rack	
68	C	H	0	0	1	0	7	6	2			1	Bushing	
69	C	H	0	0	0	0	5	5	3			1	Spring	
70			0	3	0	1	0	1	4			4	Screw	
†71	C	W	A	0	0	0	8	9	9	8		1	Spacer	
†72	C	W	D	0	0	0	7	2	0	1		1	Body	
†73	O	L	0	0	0	7	2	0	4			8	Screw	
†74	C	W	A	0	0	0	8	0	8	1		8	Lock Plug	
†75			0	1	0	0	5	2	0			8	Screw	
76	O	L	0	0	0	7	2	2	7			1	Ball	
77	C	W	0	0	0	8	1	0	1			1	Spring	
78			0	3	0	0	3	0	4			1	Screw	
79	C	H	0	0	0	8	4	2	0			1	Indicator	
80	H	C	0	0	0	9	7	4	5			1	Shield	
‡81	C	H	B	0	0	1	1	1	3	2		1	Turret Drive Shaft	
‡82	C	H	A	0	0	1	1	1	2	7		1	Support For Pins	
83	C	W	0	0	0	9	9	1	6			1	Ring	
84	C	W	0	0	0	9	0	5	1			1	Bearing	
85	U		0	0	0	4	1	8	0			2	Needle Bearing	
86	D	V	0	0	0	8	3	5	3			1	Bearing	
87	C	H	B	0	0	0	8	9	9	5		1	Retaining Plate	
88	C	H	0	0	0	7	9	8	8			1	Set-Screw	
89	C	H	A	0	0	1	1	1	3	3		1	Lock Plug	
90	C	H	0	0	0	3	1	0	0			1	Oil Plug	
91	O	R	0	0	0	0	4	0	6			1	O-Ring	
92	O	R	0	0	0	1	6	1	3			1	O-Ring	
93	C	H	0	0	0	8	0	5	0			1	Left Wiper	
94			0	3	0	0	3	0	6			9	Screw	
95	C	H	0	0	0	8	0	5	0		T	1	Top Wiper	
96	C	H	0	0	0	8	0	5	0		R	1	Right Wiper	

\*Parts Included in Turret Base Plate and Cover Assembly, CH-0007202  
†Parts Included in Body Assembly, CWC-0007201-01  
‡Parts Included in Turret Drive Shaft Assembly, CHB-0011132-01

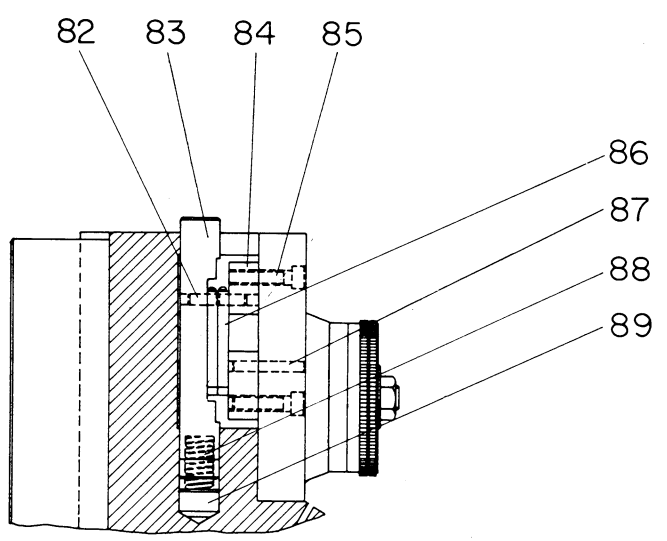
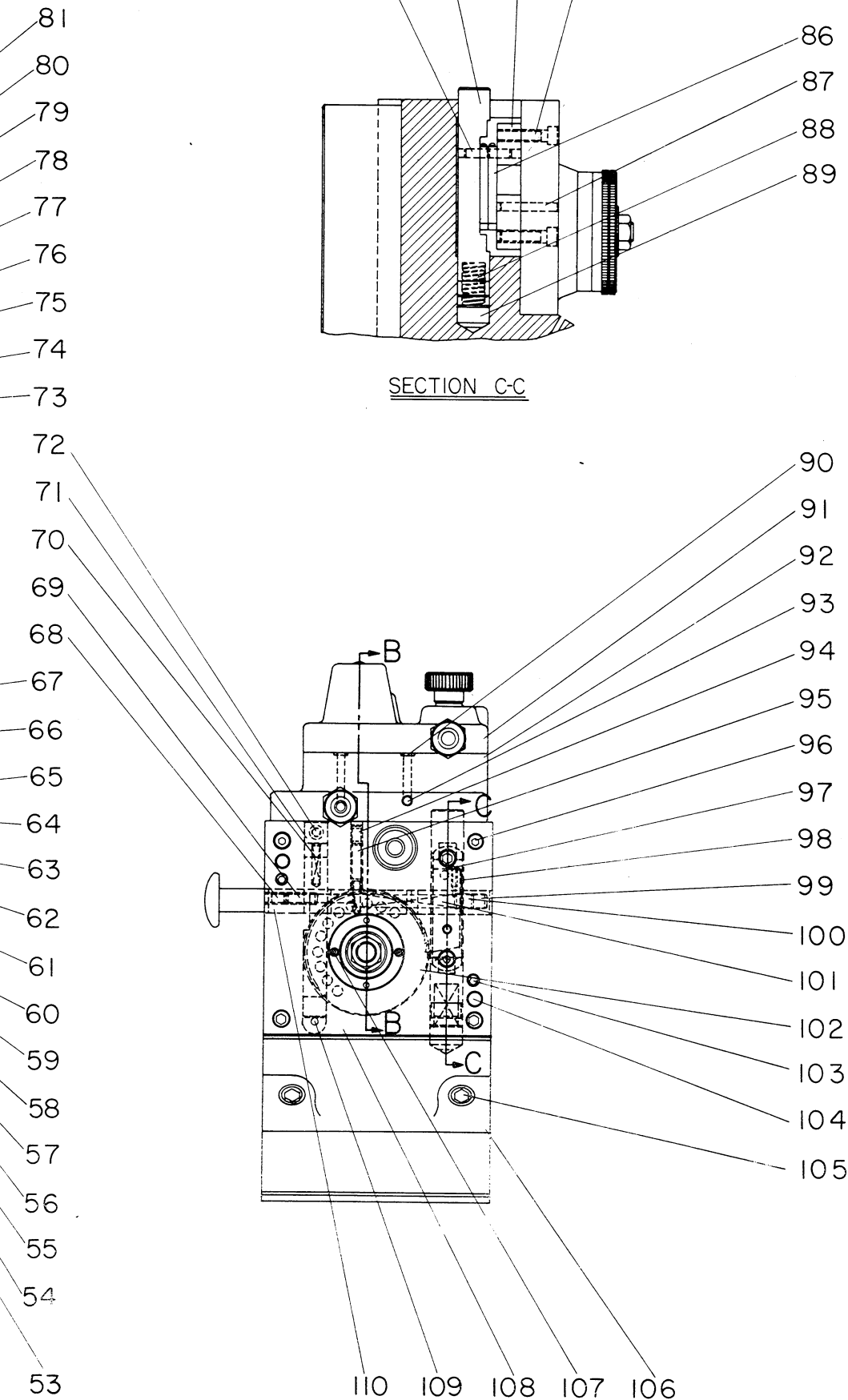
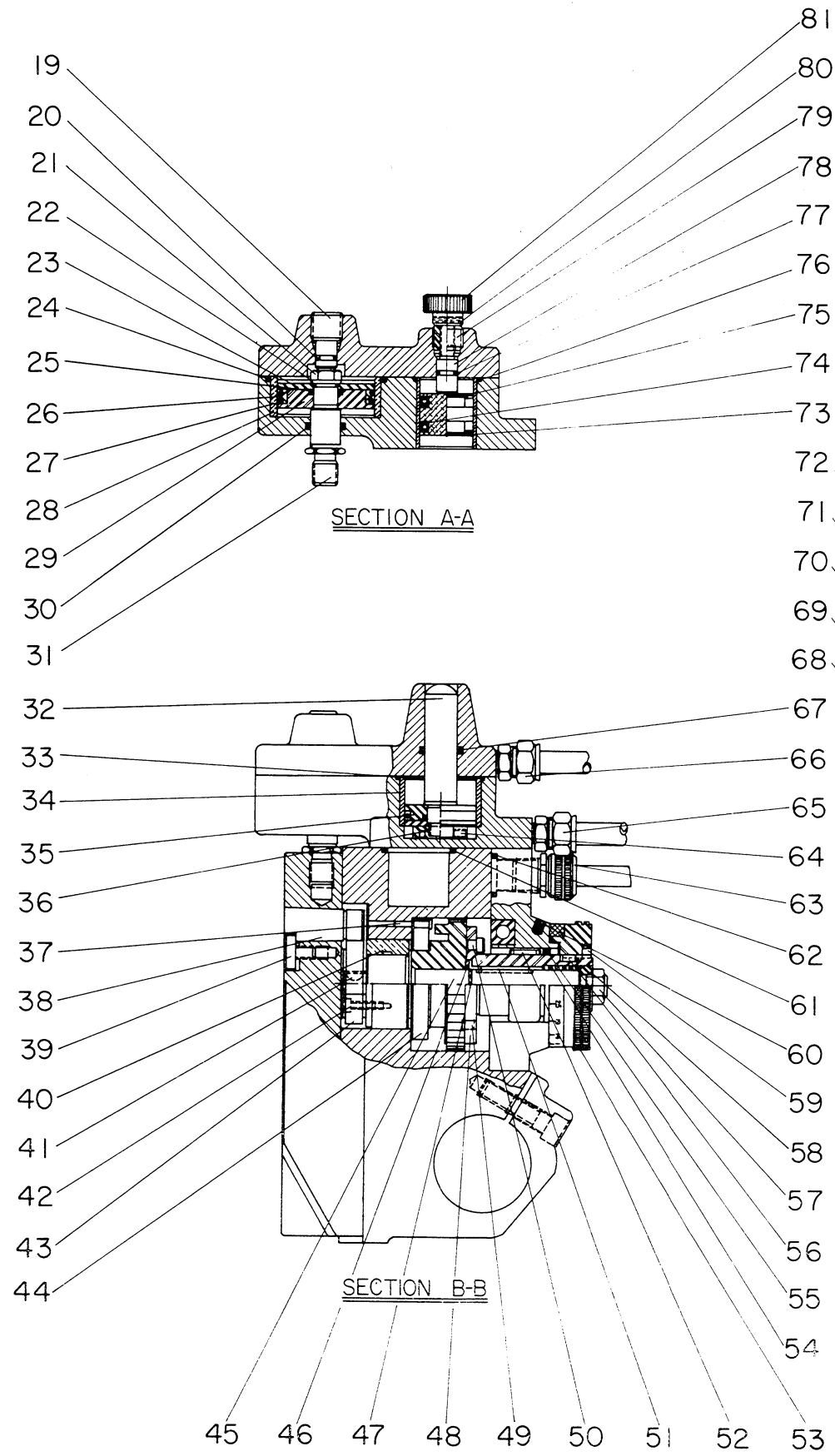
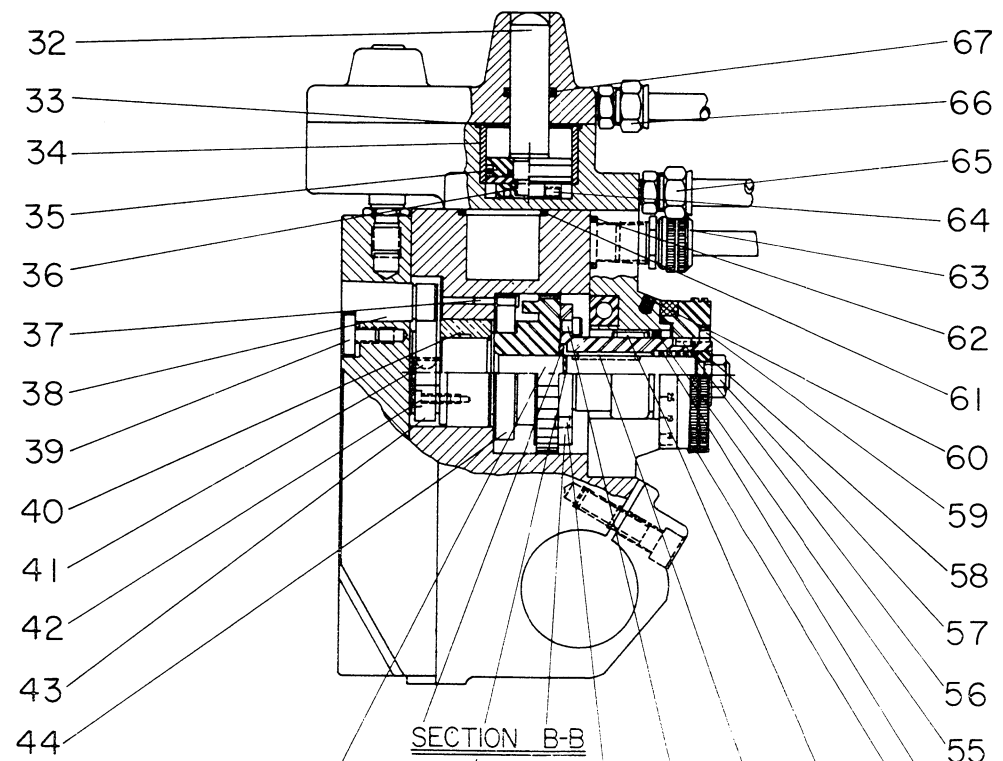
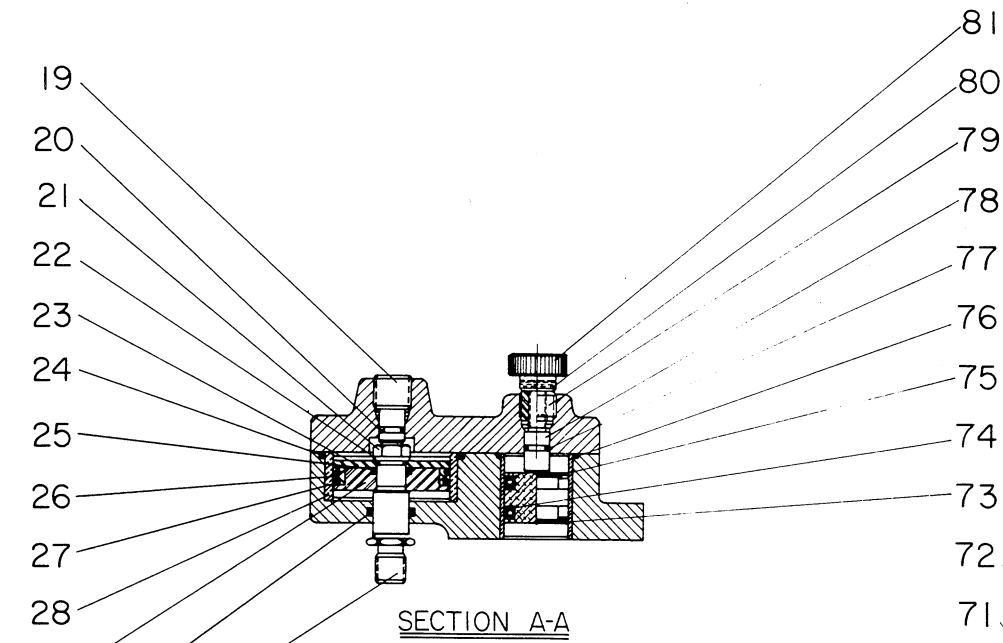
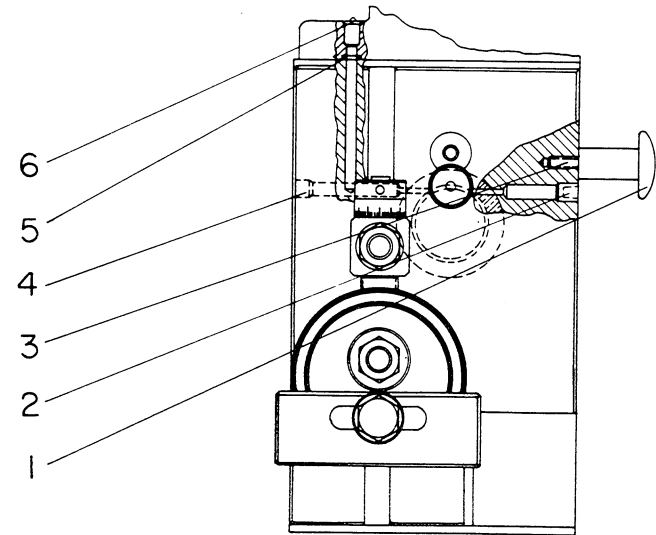
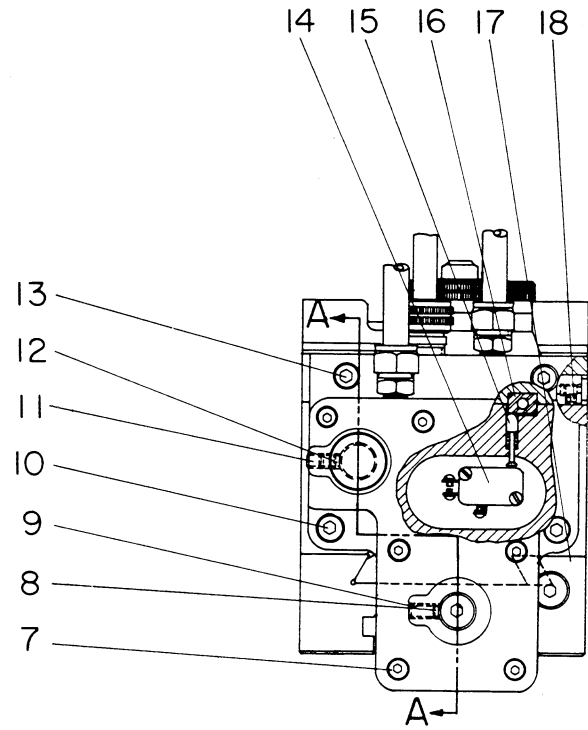
# PEDESTAL



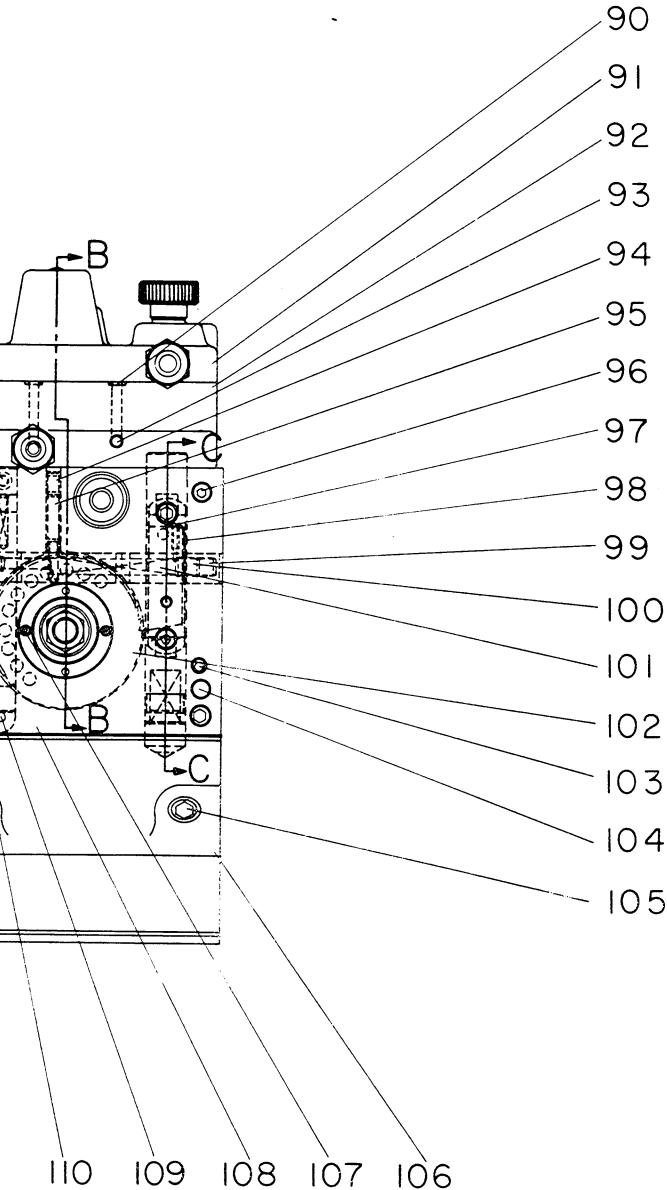
CARRIAGE ASSEMBLY VIEW II



# AUTOMATIC CHASING ASSEMBLY



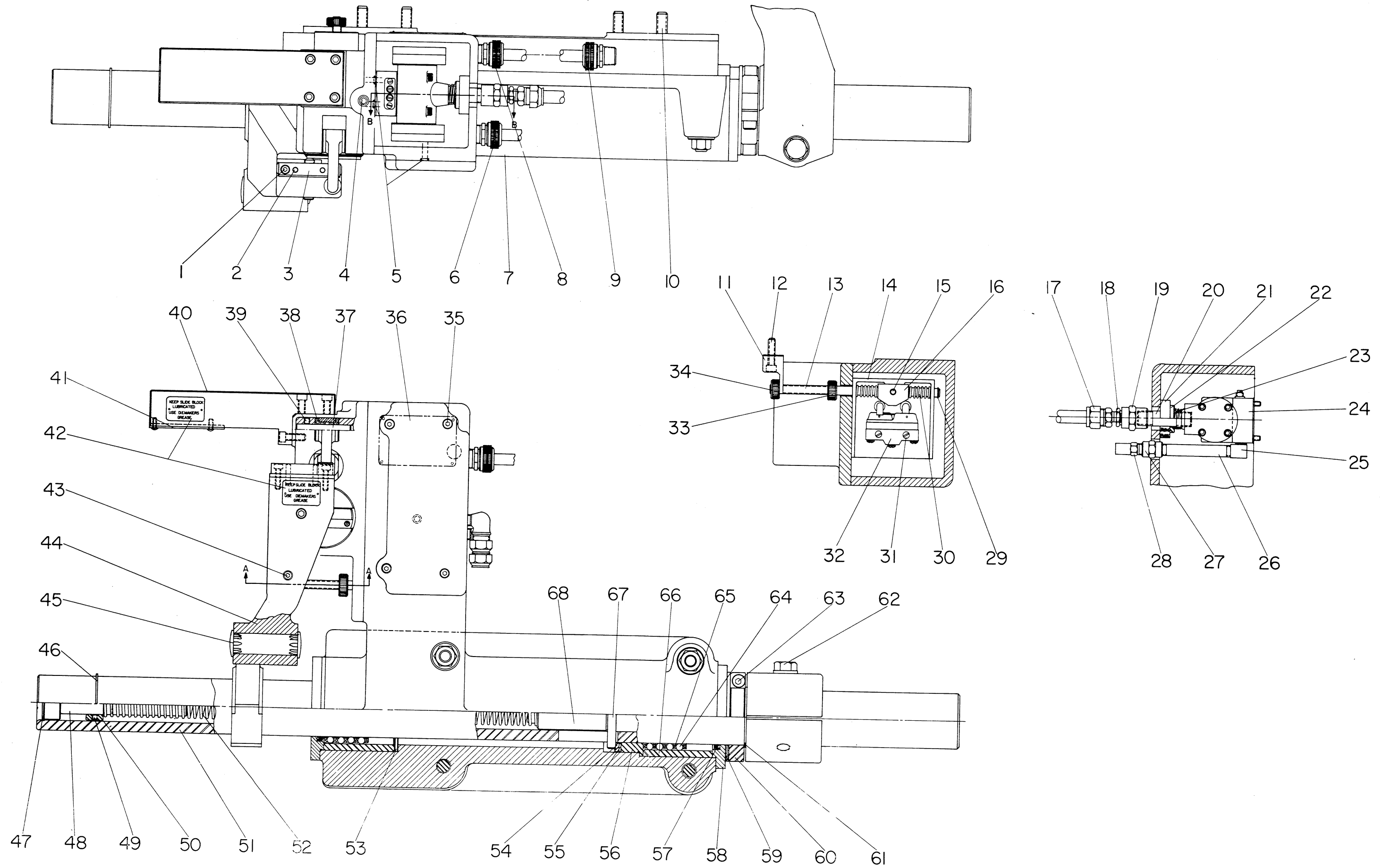
SECTION C-C







# AUTOMATIC CHASING KNOCKOUT CONTROL ASSEMBLY VIEW I

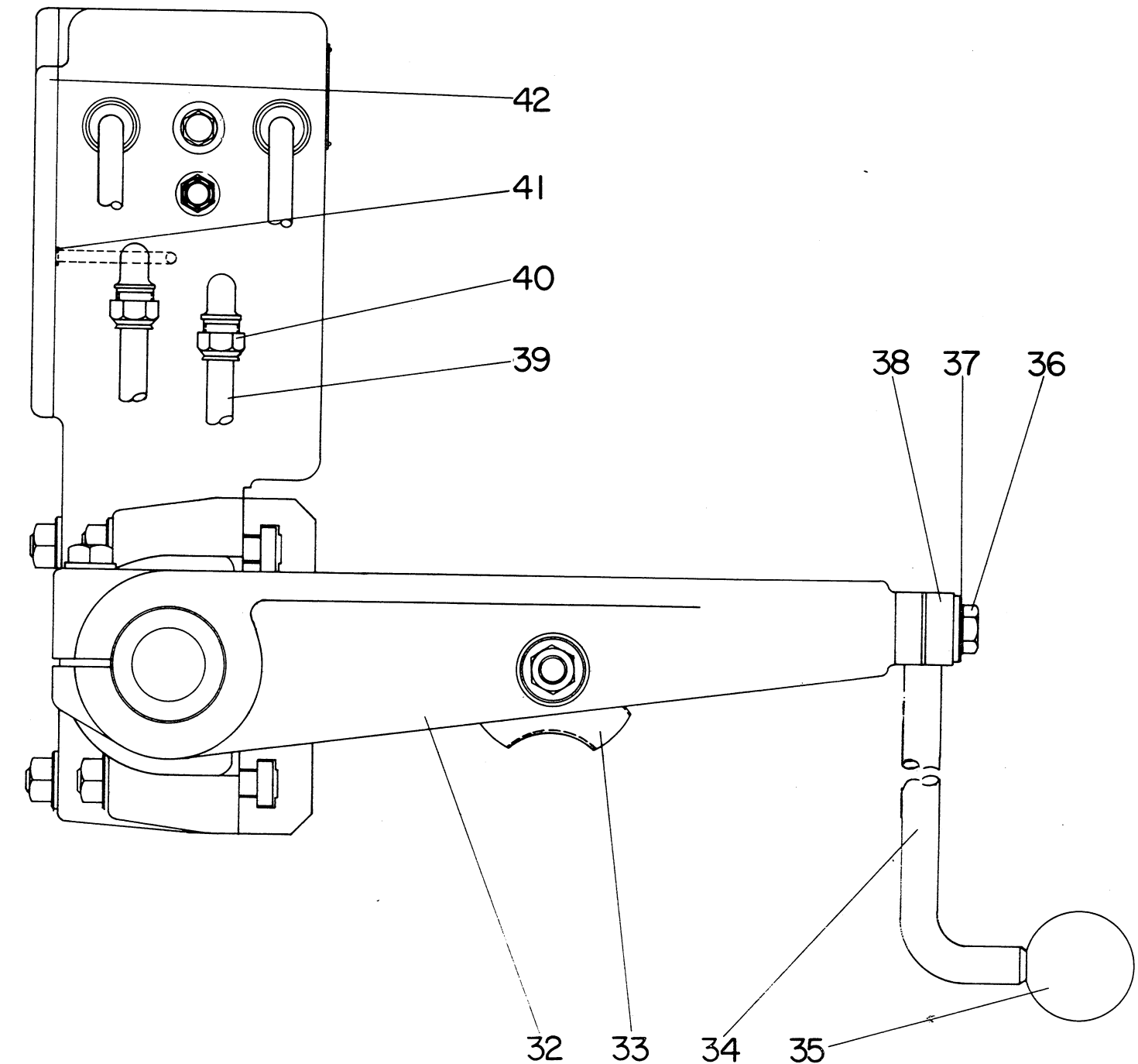
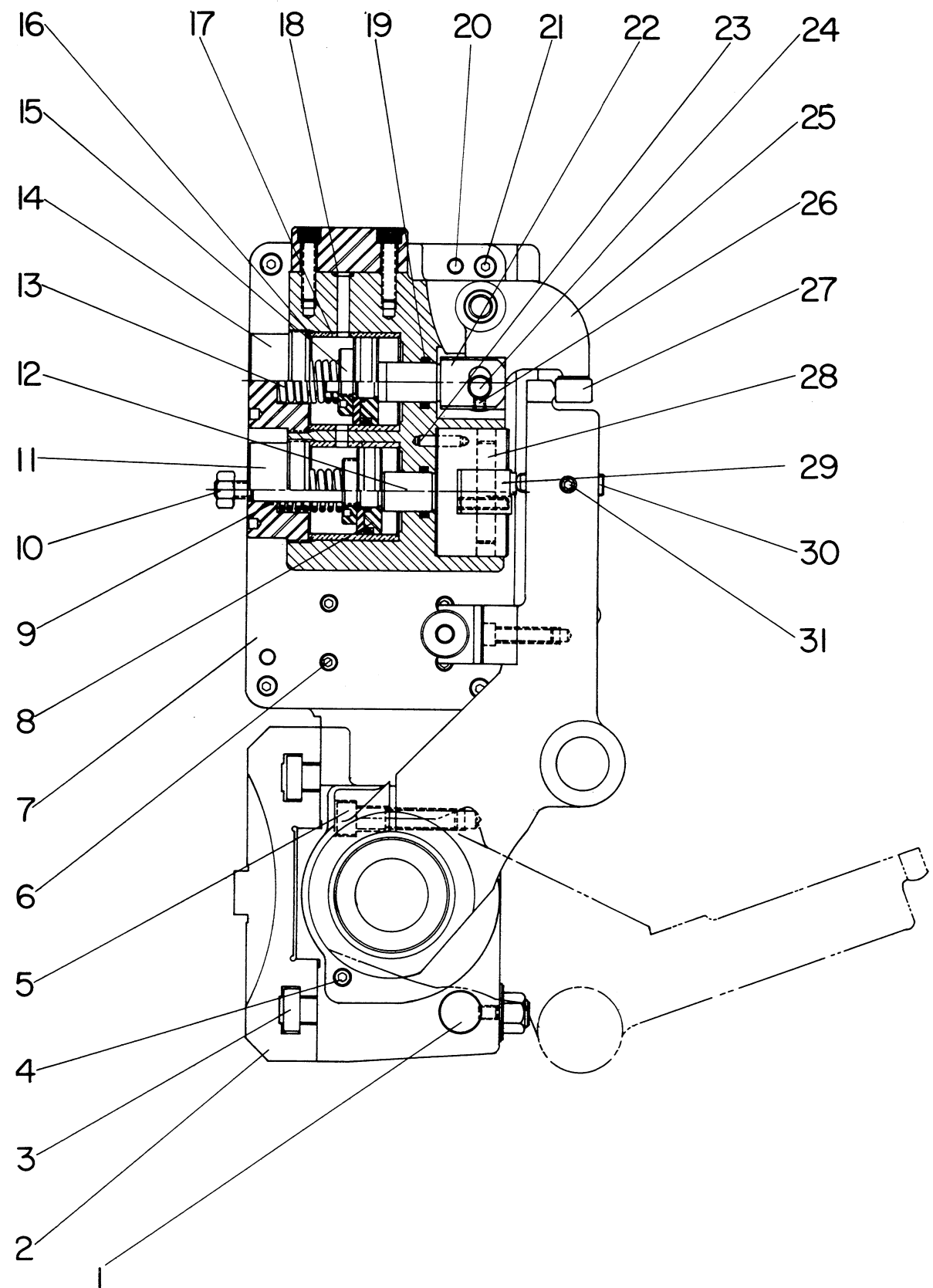


**AUTOMATIC CHASING KNOCKOUT CONTROL ASSEMBLY VIEW I**

KEY	PART NUMBER										PCS	NAME	
1			0	1	0	0	3	1	2			2	Screw
2	C	D	0	0	0	8	4	2	6			2	Dowel
3	C	T	0	0	1	1	0	8	0			1	Support Block
4	5		0	0	0	1	4	6	7			1	Pipe Plug
5	O	R	0	0	0	0	3	0	5			3	O-Ring
6	1	6	0	0	0	3	0	1	1	0	2	4.26"	Cord
	C	T	0	0	1	0	8	0	5			1	Cord Grip
	C	T	0	0	1	0	8	0	6			1	Nut
	O	R	0	0	0	0	7	1	0			1	O-Ring (7/16" ID x 5/8" OD)
	O	R	0	0	0	0	8	1	1			1	O-Ring (1/2" ID x 11/16" OD)
7	A	H	A	0	0	0	7	3	0	9		1	Mounting Bracket
8	1	6	0	0	0	3	0	1	1	0	3	3.5"	Cord
	C	T	0	0	1	0	8	0	5	0	1	1	Cord Grip
	C	T	0	0	1	0	8	0	6	0	1	1	Nut
	O	R	0	0	0	0	7	1	0			1	O-Ring (7/16" ID x 5/8" OD)
	O	R	0	0	0	0	8	1	1			1	O-Ring (1/2" ID x 11/16" OD)
9	C	T	0	0	1	0	8	0	5	0	1	1	Cord Grip
	C	T	0	0	1	0	8	0	6	0	1	1	Nut
	O	R	0	0	0	0	7	1	0			1	O-Ring (7/16" ID x 5/8" OD)
	O	R	0	0	0	0	8	1	1			1	O-Ring (1/2" ID x 11/16" OD)
10			0	1	0	1	0	1	6			8	Screw
11	C	T	0	0	1	1	0	9	4			1	Tripper
12			0	1	0	0	5	1	6			1	Screw
13	C	T	0	0	0	7	3	7	2			1	Trip Screw
14	C	T	0	0	1	1	0	9	5			1	Mount
15			0	5	5	0	2	0	3			1	Screw
16	C	T	0	0	0	0	9	8	4	0	1	1	Trip Block
17	F	H	0	0	1	0	7	8	7			1	Fitting
18	A	U	A	0	0	1	0	7	8	5		1	Reducer
19	C	T	0	0	1	1	0	9	6			1	Coupling
20	C	T	0	0	1	1	0	9	2			1	Block
21	C	T	0	0	0	7	3	6	7			1	Felt
22	L	H	0	0	0	2	0	6	8			1	Washer
23	C	T	0	0	0	6	5	5	3			1	Spring
24	C	T	A	0	0	1	1	0	9	0		1	Valve
25	C	T	0	0	0	7	7	0	9	0	1	1	Elbow
26	C	T	0	0	1	1	0	9	2	0	7	1	Nipple
27	C	T	0	0	1	1	0	9	6	0	1	1	Coupling
28	C	T	0	0	1	1	3	3	5			1	Muffler
29	3	1	0	0	0	8	2	3	1	0	2	1	Retaining Ring
30	C	T	0	0	0	9	7	6	4			2	Spring
31	H	C	0	0	0	2	8	4	0			2	Washer
	S	L	0	0	0	8	1	3	7			2	Lock Washer
	M	N	0	0	0	8	1	3	8			2	Nut
			0	3	5	0	1	2	8			2	Screw
32	D	V	B	0	0	1	0	2	2	4		2	Limit Switch

KEY	PART NUMBER										PCS	NAME	
33	C	T	0	0	1	0	4	1	9	0	1	1	Adjusting Nut
	C	H	0	0	0	4	7	3	2			2	Plug
	N		0	5	5	0	3	0	3		L	2	Screw
34	C	T	0	0	1	0	4	1	9			1	Adjusting Nut
	C	H	0	0	0	4	7	3	2			1	Plug
			0	5	5	0	3	0	3			1	Screw
35			0	1	0	0	5	1	0			4	Screw
36	C	T	B	0	0	0	0	2	5	6		1	Name Tag
	R			0	0	0	8	0	4	4		4	Pin
37	C	D		0	0	0	4	6	4	3		1	Dowel
38	C	T		0	0	1	1	0	9	3		2	Bushing
39				0	5	5	0	3	0	4		1	Screw
40				0	1	0	0	6	1	6		4	Screw
				0	1	0	0	6	1	2		2	Screw
	A	H		0	0	1	1	5	8	1		1	Support
41	A	H		0	0	1	1	5	7	6		1	Wear Plate
				0	3	0	0	1	0	6		4	Screw
42	C	T		0	0	1	0	0	1	1		2	Plate
	R			0	0	0	8	0	4	4		2	Pin
43				0	5	5	0	3	0	6		1	Screw
44	A	H		0	0	1	1	0	8	6		1	Hold Down Bar
45	7	5		0	0	1	0	3	3	1		2	Dot Plug
46	2	0	0	0	0	8	2	3	1	0	2	1	Retaining Ring
47	1	2	5	0	0	0	8	2	3	1	0	1	Retaining Ring
48	C	T		0	0	0	9	9	3	5	0	1	Plug
49				0	5	5	0	3	0	3		1	Seal
50	C	T		0	0	1	0	4	1	2		1	Collar
51	C	T		0	0	0	7	3	6	0		1	Chasing Bar
52	H	C		0	0	0	9	8	9	5		1	Spring
53	C	T		0	0	1	0	7	7	0		1	Spacer
54	C	T		0	0	1	1	0	8	3		1	Spacer
55	C	T		0	0	0	9	3	6	3		1	Thrust Bearing
56	C	T		0	0	0	8	9	9	8		1	Spacer
57	C	T		0	0	1	0	1	2	4		2	Seal
58	C	T		0	0	0	8	0	5	9		2	Cap
59	C	T		0	0	1	0	5	4	2		1	Spacer
60	C	T		0	0	0	4	0	2	5		1	Lock
61	2	0	0	0	0	8	2	3	1	0	2	1	Retaining Ring
62	5	P		0	0	0	6	4	3	4		1	Lock Washer
	C	T		0	0	0	3	5	4	9	0	1	Clamp Bolt
63				0	1	0	0	7	1	6		1	Screw
64	C	T		0	0	0	6	0	5	8		144	Ball Bearing
65	C	T		0	0	1	1	0	7	6		2	Bearing Bushing
66	C	T		0	0	1	1	0	7	7		2	Bearing Bushing
67	C	D		0	0	0	4	6	4	1		1	Dowel
68	C	T		0	0	0	9	9	3	5		1	Plug

# AUTOMATIC CHASING KNOCKOUT CONTROL ASSEMBLY VIEW II



POWER CASE

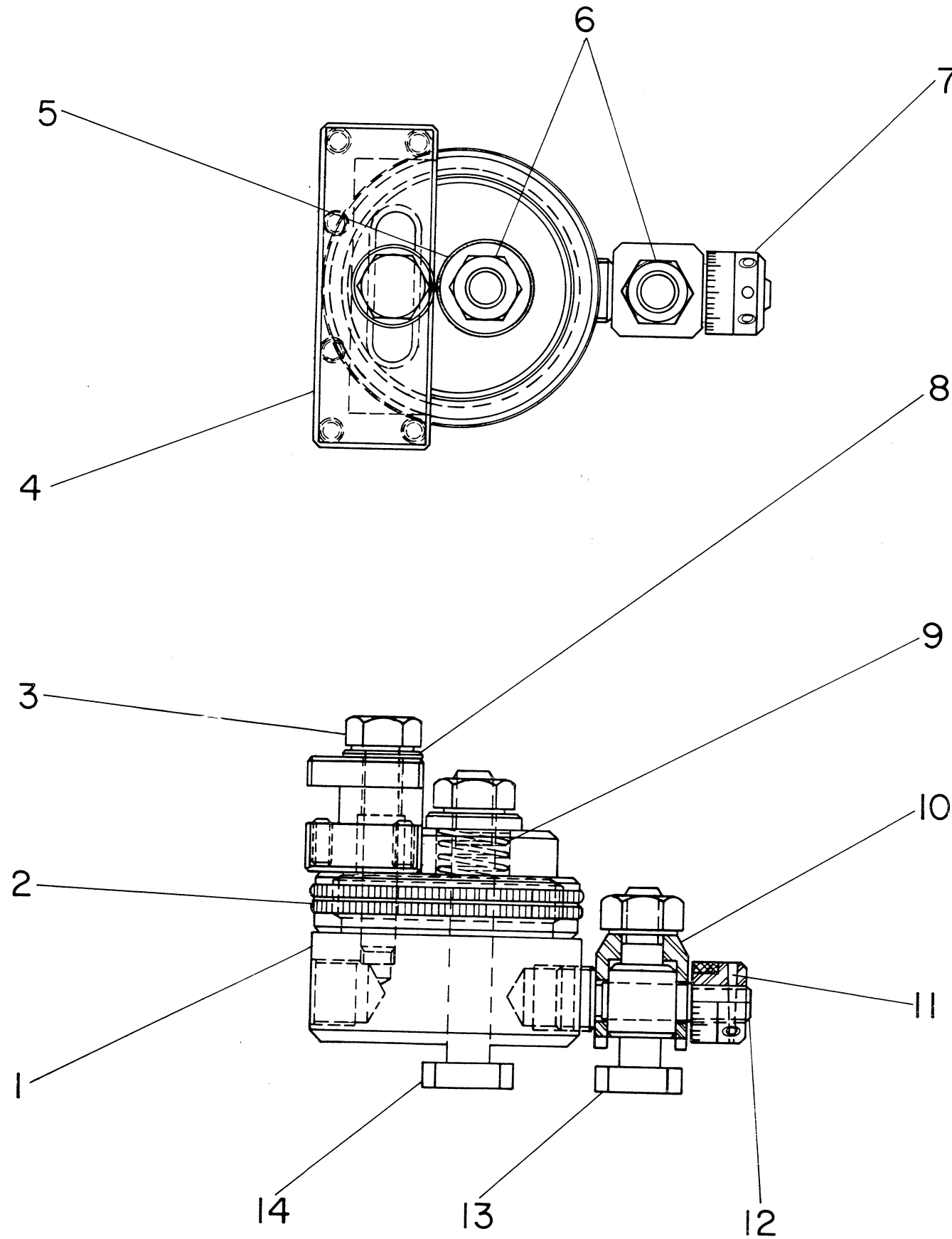
KEY	PART NUMBER	PCS	NAME
1	0 6 6 0 5 1 0	4	Screw
	0 0 0 2 8 4 5	4	Lock Washer
2	0 0 0 2 8 4 3	4	Nut
	0 3 5 0 6 0 8	5	Screw
3	0 0 0 2 8 4 5	5	Lock Washer
	0 0 1 1 0 3 2	14	Terminal Block
	0 0 1 1 0 3 2	1	Barrier Plate
	0 0 1 1 0 3 2	2	Retaining Clip
	0 0 1 1 0 3 2	1	Mounting Track
	0 1 1 0 2 0 6	2	Screw
4	0 0 0 9 1 7 5	1	Terminal Marker Strip
	0 0 1 0 8 2 1	1	Wire Duct
	0 0 1 0 8 2 1	1	Wire Duct Cover
5	0 0 1 0 8 2 1	2	Rivet
	0 0 0 8 7 7 5	1	Contactor
6	0 3 6 0 3 0 7	3	Screw
7	0 0 0 8 7 7 5	3	Contactor
8	0 3 6 0 3 0 7	4	Screw
	0 0 1 0 8 2 1	1	Wire Duct
	0 0 1 0 8 2 1	1	Wire Duct Cover
9	0 0 1 0 8 2 1	2	Rivet
	0 0 1 1 6 0 1	1	Mounting Base
	0 0 0 8 1 0 4	1	Plastic Tie
10	0 0 0 9 6 1 0	3	600V, 10 Amp Fuse (208V, 230V, and 230/460V 60 Hz Machines and 200V, 208V, and 230V 50 Hz Machines)
	0 0 0 9 6 1 0	3	600V, 5 Amp Fuse (460V and 575V 60 Hz Machines and 380V, 400V, 415V, and 440V 50 Hz Machines)
11	0 0 1 0 0 1 6	1	Disconnect Switch
12	0 3 6 0 3 0 7	3	Screw
13	0 0 1 0 3 0 2	1	Warning Plate
	0 3 5 0 1 0 4	2	Screw
	0 0 1 0 3 0 2	1	Warning Plate (Canadian Machines Only)
14	0 3 5 0 1 0 4	2	Screw (Canadian Machines Only)
	0 0 1 0 5 4 5	1	Ground Post
	0 0 0 9 0 2 8	1	Washer
15	0 0 1 0 5 4 6	3	Nut
	0 0 0 2 8 3 4	1	Cam Reverse Switch
	0 3 5 0 5 0 8	4	Screw
16	0 0 0 9 1 8 1	4	Lock Washer
	0 0 1 0 5 4 5	1	Ground Post
	0 0 0 9 0 2 8	1	Washer
17	0 0 1 0 5 4 6	3	Nut
	0 0 0 1 9 0 4	1	Switch Plate

KEY	PART NUMBER	PCS	NAME
18	0 0 0 8 7 7 6	1	Transformer (230V, 60HZ; 460V, 60HZ; 230/460V, 60HZ)
	0 0 0 8 7 7 6	1	Transformer (208V, 60HZ)
	0 0 0 8 7 7 6	1	Transformer (575, 60HZ)
	0 0 0 8 7 7 6	1	Transformer (230V, 50HZ; 208V, 50HZ; 440V, 50HZ; 200V, 50HZ; 380V, 50HZ; 400V, 50HZ; 415V, 50HZ)
19	0 0 1 1 2 9 8	1	Suppressor
	0 0 0 9 1 8 8	2	Terminal
20	0 0 0 9 9 7 4	2	Rubber Boot
	0 0 0 8 2 3 1	2	Retaining Ring
21	0 0 0 2 8 3 5	1	Cam Speed Switch
	0 3 5 0 5 0 8	4	Screw
	0 0 0 9 1 8 1	4	Lock Washer
22	0 0 0 4 1 5 8	1	Switch Case
23	0 0 1 0 3 6 9	1	Legend Plate
	0 0 0 8 0 4 4	2	Pin
24	0 0 0 9 5 5 3	1	Coolant Switch
25	0 0 1 0 0 1 7	3	Cutout
26	0 0 0 9 6 1 0	1	Fuse (2FU)
27	0 0 0 9 6 1 0	1	Fuse (3FU) **
28	0 0 0 9 6 1 0	1	Fuse (4FU)
29	0 0 1 1 0 3 2	21	Terminal Block
	0 0 1 1 0 3 2	1	Barrier
	0 0 1 1 0 3 2	2	End Clamp
	0 0 1 1 0 3 2	1	Nylon Plug
	0 0 1 1 0 3 2	1	Mounting Track
	0 1 1 0 2 0 6	2	Screw
	0 0 0 9 1 7 5	1	Marker Strip
30	0 0 0 9 3 3 5	2	Rectifier
	0 3 6 0 2 1 0	2	Screw
31	0 0 1 1 1 8 3	2	Varistor
	0 0 1 0 4 7 3	5 Ft.	Insulation Tubing
*32	0 0 1 1 1 7 0	2	Relay
33	0 0 1 1 1 7 9	1	Power Supply and Relay Assembly
	0 3 6 0 3 0 7	4	Screw
34	0 0 0 8 7 7 5	1	Contactor
35	0 3 5 0 3 1 8	2	Screw
	0 0 1 0 8 2 1	2	Wire Duct
	0 0 1 0 8 2 1	2	Wire Duct Cover
36	0 0 1 0 8 2 1	4	Rivet
	0 0 0 8 7 7 5	1	Contactor
	0 3 5 0 3 1 8	2	Screw
37	0 0 0 8 6 4	9	Overload Bracket
	0 0 1 1 0 6 3	3	Insulator
	0 3 6 0 3 0 7	9	Screw
	0 3 5 0 2 0 7	9	Screw

\*Included in Power Supply and Relay Assembly, CHD-11179.

\*\* With threaded attachment only.

# TOOL POST ASSEMBLY



KEY	PART NUMBER										PCS	NAME		
1	C	T	A	0	0	1	0	6	3	3	1	Support For Tool Post		
2	C	T		0	0	1	0	6	3	0	1	Adjusting Nut		
3	C	T		0	0	0	3	5	4	9	1	Bolt For Tool Block		
4	C	T		0	0	0	7	3	8	9	1	Square Shank Tool Block		
				0	5	5	0	5	0	8	6	Set-Screw		
	C	T		0	0	0	7	3	8	9	0	1	1	Round Shank Tool Block
	C	W	C	0	0	0	7	3	9	2	1	Clamp Bolt		
				0	1	0	0	5	1	4	1	Screw		
	C	T		0	0	0	7	3	8	9	0	2	1	Threading Tool Block (Inserts Not Included)
*	H	B	F	0	0	0	0	0	3	1	P	R	1	Fine Pitch Right Handed Carbide Threading Tool Grade K68
*	H	B	F	0	0	0	0	0	3	1	P	L	1	Fine Pitch Left Handed Carbide Threading Tool Grade K68
*	H	B	F	0	0	0	0	0	3	2	P	R	1	Fine Pitch Right Handed Carbide Threading Tool Grade K68
*	H	B	F	0	0	0	0	0	3	2	P	L	1	Fine Pitch Left Handed Carbide Threading Tool Grade K5H
*	H	B		0	0	0	0	0	3	1	P	R	1	Right Handed Carbide Threading Tool Grade K68
*	H	B		0	0	0	0	0	3	1	P	L	1	Left Handed Carbide Threading Tool Grade K68
*	H	B		0	0	0	0	0	3	2	P	R	1	Right Handed Carbide Threading Tool Grade K5H
*	H	B		0	0	0	0	0	3	2	P	L	1	Left Handed Carbide Threading Tool Grade K5H
5	C	T		0	0	0	2	0	6	8	1	Spacer		
6	5			0	0	0	2	0	1	2	2	Nut		
7	C	T	A	0	0	1	0	3	3	5	0	1	1	Dial And Support Assembly
	C	T	A	0	0	1	0	2	4	7	0	1	1	Support
	C	T		0	0	0	0	3	2	9	0	1	1	Dial
8	U			0	0	0	4	1	4	3	1	Washer		
9	C	T		0	0	0	6	5	3	9	1	Spring		
10	C	T	A	0	0	1	1	1	2	3	1	Post For Screw		
11	3	7		0	0	0	1	1	4	4	1	Taper Pin		
12	C	T	A	0	0	1	1	1	2	1	1	Adjusting Bolt		
13	C	T		0	0	1	1	1	2	2	1	Bolt For Post		
14	C	T		0	0	0	2	0	1	1	S	11	T-Bolt	

\*Threading tool inserts for Threading Tool Block CT-7389-2.  
Inserts are not included with block and must be ordered separately.